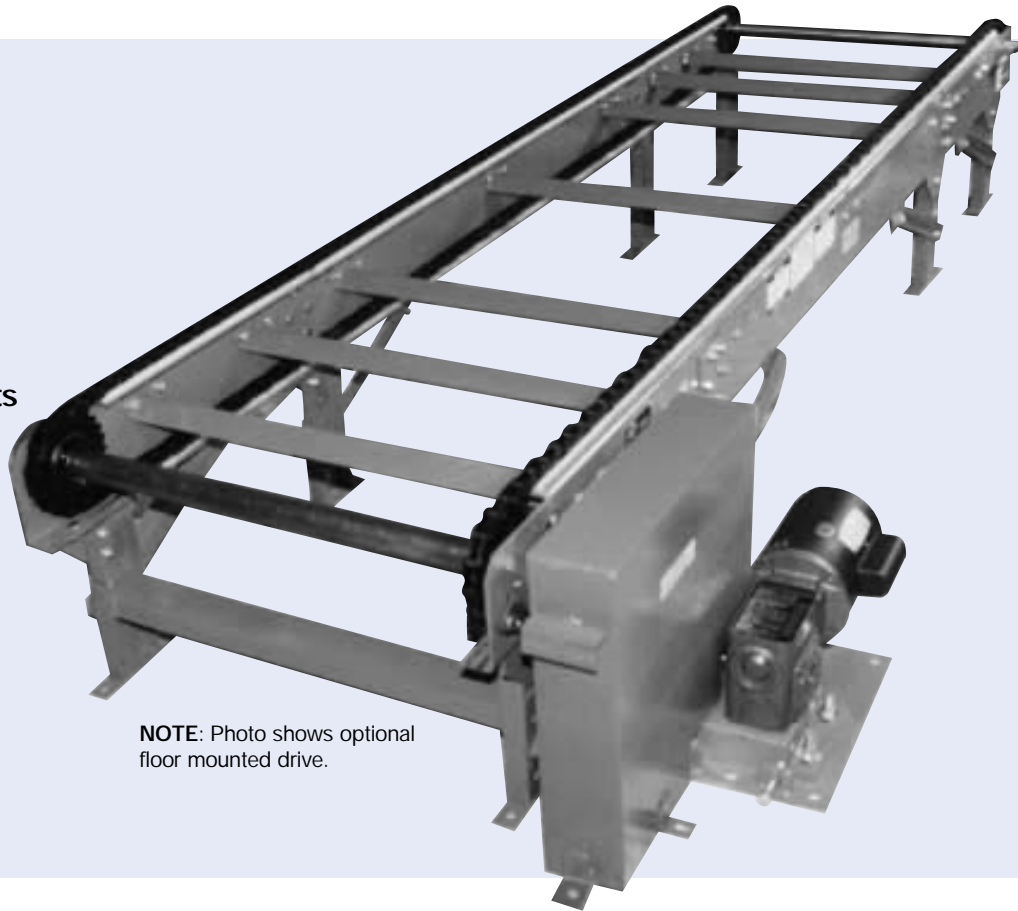


# MODEL "DC"

## Drag Chain Conveyor

- Handles pallets the hard way
- Quiet operation
- Low profile - 12" elevation
- Available with zero pressure accumulation feature



NOTE: Photo shows optional floor mounted drive.

### STANDARD SPECIFICATIONS

**Frame** - 9" x 7 gauge formed and painted steel channel frames. Sections are bolted together with splice plates and floor supports.

**Chain** - (2) C-2060 double pitch conveyor chains, straight side bar, on 36" centers.

**Chain Guide** - UHMW

**Floor Supports** - 12" minimum, with adjustment to 13". One support supplied at each end of conveyor and at each bed joint.

**Motor** - 1 HP 230/460-3-60 TE motor, C-Face. Motor and speed reducer are located underneath conveyor frame.

**Speed Reducer** - Heavy duty worm gear for C-Faced mounted motor.

**Sprockets** - Hardened 2060BTB26 sprockets with 1<sup>15</sup>/<sub>16</sub>" diameter CRS.

**Bearings** - Sealed, pre-lubricated with cast iron housing.

**Speed** - 30 FPM constant speed.

**Capacity** - 10,000 lbs. maximum distributed live load at 30 FPM. Maximum motor size 3 HP.

### OPTIONAL EQUIPMENT

**Elevation** - Other supports available for higher elevations. Contact factory.

**Motors** - Single phase, energy efficient, to 1½ HP (maximum).

**Chain** - 60 F single pitch conveyor chain with straight side bar for quieter operation and speeds greater than 30 FPM.

**Chain Centers** - Other chain centers and multiple chains available, 18" minimum chain centers. Contact factory.

**Speeds** - For speeds greater than 30 FPM, contact factory.

**Zero Pressure Accumulation** - Model "DC" can be supplied with a pneumatic operated device to raise loads above chains to stop product movement and accumulate with zero pressure. A PLC is required when this feature is desired. Contact factory.

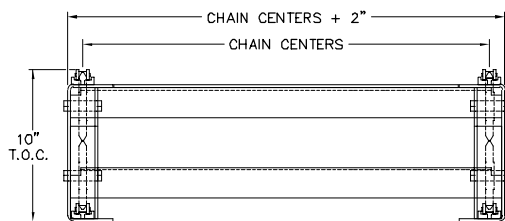
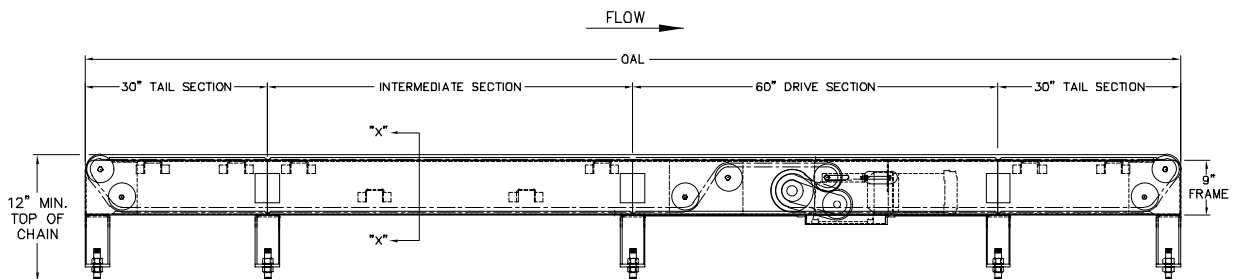
**Electrical Controls** - Magnetic starters and push button stations. Manual motor starters with overload protection, others.

# MODEL "DC"

Overall Length	Frame Width	20"	26"	32"	38"	44"	50"
	Chain Center	18"	24"	30"	36"	42"	48"
10'	<b>Weights (in lbs.)</b>	540	585	630	678	723	768
15'		726	790	855	918	983	1048
20'		911	995	1080	1158	1243	1328
25'		1096	1200	1305	1398	1503	1608
30'		1281	1405	1530	1638	1763	1888
35'		1466	1610	1755	1878	2023	2168
40'		1651	1815	1980	2118	2283	2446
45'		1836	2020	2205	2358	2543	2728
50'		2021	2225	2430	2598	2803	3008
55'		2206	2430	2655	2838	3063	3288
65'		2576	2840	3105	3318	3583	3848
75'		2946	3250	3555	3798	4103	4408
85'		3316	3660	4005	4248	4623	4968
95'		3686	4070	4455	4698	5143	5528

## Load Capacity Chart

HP	30 FPM WITH 2 STRANDS	
	TOTAL LIVE LOAD (lbs.)	
	Up to 50'	Up to 100'
1	4,000	3,000
2	6,500	6,000
3	10,000	9,500



SECTION VIEW "X-X"